

Host your next event at the
MCT CENTER FOR THE PERFORMING ARTS
On Broadway in Beautiful Downtown Missoula, Montana

“Viewing a live performance should be the culmination of an exciting professional experience. The succession of audience spaces within the building is designed to carry this out. From the small, low entry vestibule the patron enters the large, high lobby, which spills visually onto Broadway, and then, via the small low light lock vestibule, into the auditorium. The auditorium and stage are coupled closely, with no seat being farther than 45 feet from the stage; from first entry into the auditorium, the patron is swept into the excitement to come.” *Peder Knudson, Theatre Consultant, Knudson-Benson Associates, Seattle, WA*

The opening of MCT’s Center for the Performing Arts was eagerly awaited by the entire Missoula community when it was unveiled in October of 1998. Subsequently, the entire facility bustles daily with activity. By providing accessible and affordable meeting and performance space, MCT’s Center is fulfilling the hopes of many local agencies that supported its construction – it is Missoula’s unofficial civic center.

The MCT Center for the Performing Arts has 22,000 square feet of rentable space available for use throughout the year. By comparison, local hotels only offer approximately 7,000 square feet of rentable space. The University of Montana has thousands of facility square feet, but access is difficult during the school year for non-university activities. In addition to our own Tour Project, Children’s Programs, and Community Theatre Productions, we’ve accommodated a wide variety of festivities in 9 quick years– conventions, weddings, receptions & galas, concerts, press conferences, dance & yoga classes, film festivals, chess matches, hobby groups, business retreats, fund raisers of every description, operas, ballets, and plays – and we’re here to help you with your next special event.

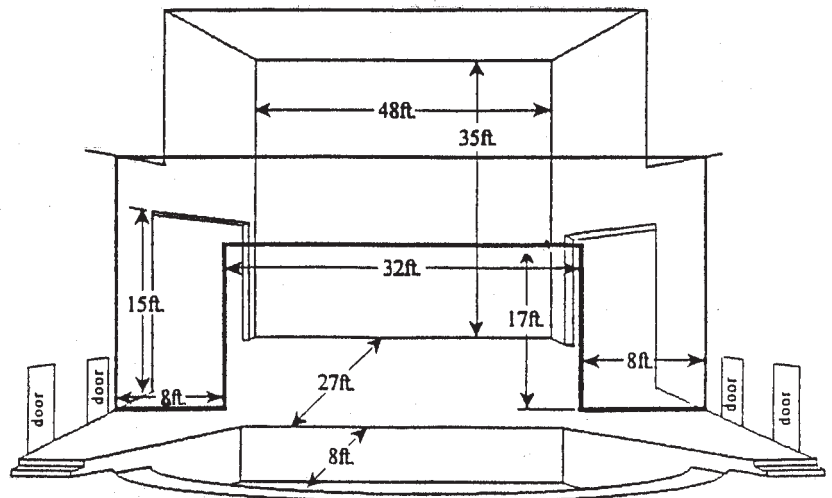
FOR FACILITY RENTAL INFORMATION, CALL DON KUKLA AT 406-728-1911

SPECIFICATIONS OF AUDITORIUM AND SURROUNDING PUBLIC SPACES:

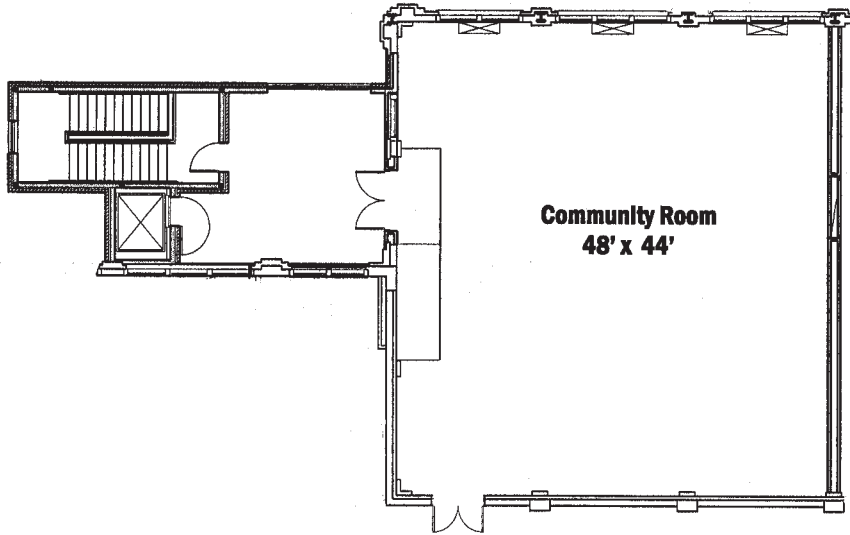
- 302 permanent seats (plus an additional 22 seats over orchestra pit)
- spacious and dramatic two-story lobby and reception area
- generous concession area complete with catering kitchen
- fifteen-foot door to stage and load-in
- accessible to persons with disabilities
- ample parking

STAGE AND BACKSTAGE

- State-of-the-art lighting and sound systems
- Permanent catwalks
- Independent stage manager’s console
- Full fly loft
- Fully trapped stage
- Two-level Broadway-style orchestra pit for 24 pieces
- Pit cover for extended stage space
- Fully equipped dressing, make-up, and shower areas
- Private “star” dressing room/restroom
- Spacious greenroom area



ADDITIONAL RENTAL SPACES

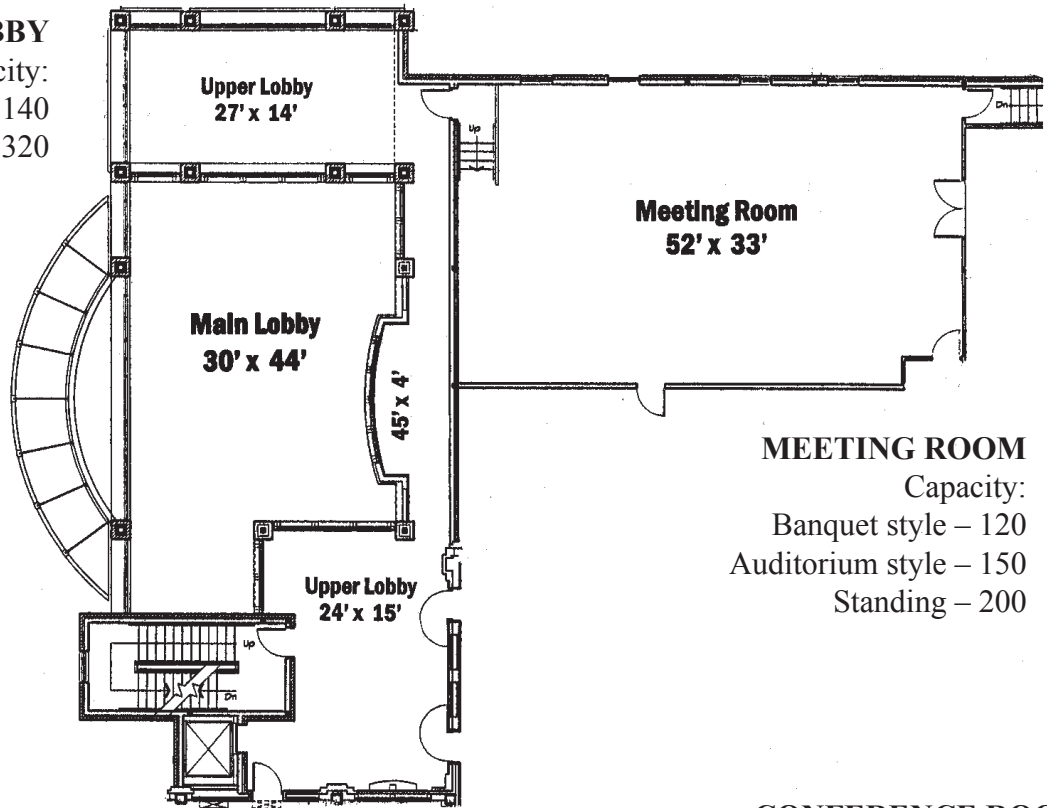


COMMUNITY ROOM

Capacity:
Banquet style – 200
Auditorium style – 230
Standing – 250

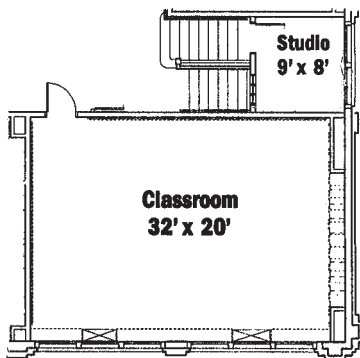
MAIN AND UPPER LOBBY

Capacity:
Banquet style – 140
Standing – 320



MEETING ROOM

Capacity:
Banquet style – 120
Auditorium style – 150
Standing – 200



CLASSROOMS & DANCE STUDIOS

4 multi-purpose classrooms
(2 carpeted classrooms; 1 dance studio; 1 double-size dance studio)
Classroom capacity: with tables – 30
Auditorium style – 60

CONFERENCE ROOM
Capacity: with flexible tables; seats 16 to 24
Includes kitchen facilities

